

Network Attached Storage Server Operating System

NASLite-SMB / NASLite-SMBG

User Manual

SMB/CIFS and HTTP support.

TABLE OF CONTENTS

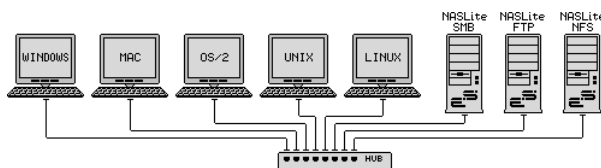
What is NASLite-SMB?	2
Why Use NASLite-SMB?.....	2
Getting NASLite-SMB	2
Basic Computer Requirements.....	2
Hardware Setup.....	2
Software Setup.....	3
Server Security.....	4
Using the NASLite-SMB Server	4
Disk Health and Monitoring.....	5
Content Backup.....	5
NASLite-SMB as an Appliance.....	5
Administration Utility	6
Status Info.....	6
NASLite-SMB Source Components	7
Copyrights and Trademarks	7
Licensing and Disclaimer.....	7

Revision History

Revision 1.3	July 12, 2004
Revision 1.2	June 18, 2004
Revision 1.1	June 8, 2004
Revision 1.0	May 20, 2004

What is NASLite-SMB?

NASLite-SMB is a Network Attached Storage (NAS) Server Operating System designed to transform a basic computer into a dedicated SMB/CIFS file server. NASLite-SMB is intended primarily for use in a small business or home office network. It is capable of handling 50 or more workgroup users easily and efficiently even when running on modest hardware. By design, NASLite-SMB is a community workgroup server and does not support features such as user management or the ability to join domains. However, it is very easy to set-up and use.



Typical Multi-OS Network Configuration

Why Use NASLite-SMB?

NASLite-SMB is optimized to perform at maximum efficiency with minimum of hardware requirements. It's compact, stable and very reliable. NASLite-SMB offers the following features and benefits:

- Easy to operate and to administer
- Inexpensive to run and maintain
- Remote administration through TELNET
- Simple to use configuration menu
- Stable and reliable
- SMB/CIFS and HTTP exported file systems
- BIOS independent fixed disk drive support
- S.M.A.R.T. support
- Large partition and file support
- Low hardware requirements
- Wide range of PCI hardware support (ISA and EISA not supported)

NASLite-SMB is well-suited for re-using older PCs that are still operational but are too limited or slow for use as desktop computers. In addition, NASLite-SMB enables older computers with BIOS limitations to use contemporary, large-capacity IDE fixed disk drives without the need for additional hardware.

For example, with NASLite-SMB you can take a retired Pentium 200MHz computer, remove the old fixed disk drives, CD-ROMs, etc., install four 160GB fixed disk drives and have a fast, reliable 640GB NASLite-SMB file server for the cost of the fixed disk drives.

NOTE: *NASLite-SMB supports only IDE fixed disk drives. Drives such as CD, DVD and Iomega-ZIP as well as SCSI, SATA, USB, or FireWire connected fixed disk drives are not supported.*

Getting NASLite-SMB

NASLite-SMB is distributed on a single 3.5 inch, 1.72MB floppy disk. A ready-to-use floppy disk may be ordered from the Server Elements (www.serverelements.com) website for a fee. The floppy disk image file is also available for download on the website.

Basic Computer Requirements

NASLite-SMB is a network file server, so a fast computer is usually not necessary. Basic requirements are:

- 486DX or better processor
- PCI bus
- 16M or more of RAM
- 1 to 4 IDE fixed disk drives (any size)
- PCI or on-board network interface adapter
- 3.5" HD floppy disk drive

In dedicated file servers, the performance is most often limited by the network speed. Fast processors will not improve performance and therefore are not required. A 200 MHz Pentium with 64M of RAM will be more than capable of servicing a typical small office.

Hardware Setup

If you are preparing a computer for conversion to a NASLite-SMB file server and wish to replace or add fixed disk drives, do this now and be sure the computer will boot with the new fixed disk drives installed.

NOTE: *It's recommended that you set the BIOS IDE fixed disk drive configuration for all IDE drives to "NOT INSTALLED" in order to avoid boot problems. NASLite-SMB does not use the BIOS to identify the available fixed disk drives. Computers with older BIOS may refuse to boot if unable to properly identify the installed fixed disk drives.*

NOTE: *NASLite-SMBG provides improved fixed disk drive performance through enhanced IDE support.*

To connect the NASLite-SMB server to the network, a PCI network interface is required. Many computers utilize a motherboard with a built-in or on-board PCI network interface and therefore will work fine. A general list of supported PCI network interface adapters is as follows:

- 3COM
- Adaptec Starfire / DuraLAN
- AMD PCnet32 / 8111
- Broadcom 4400
- Davicom
- DECchip
- Digi International RightSwitch
- DIGITAL
- EtherExpress
- HP PCLAN
- Mysom MTD-800 series
- National Semiconductor DP83810 series
- NE2000 compatible
- nForce
- RealTek
- Recal-Interlan
- SiS 900/7016
- SMC
- Sundance Alta
- TI ThunderLAN
- Tulip
- VIA Rhine
- Western Digital
- Winbond W89c840

NASLite-SMBG provides improved network performance by supporting a number of common gigabit network interfaces. NASLite-SMBG supports the following gigabit network interfaces:

- 3Com 3C985
- Alteon AceNIC
- Broadcom Tigon3
- D-Link DL2000-based
- Intel(R) PRO/1000
- Marvell Yukon Chipset

- National Semiconductor DP83820
- NetGear GA620
- Packet Engines Hamachi GNIC-II
- Packet Engines Yellowfin
- Realtek 8169
- SysKconnect SK-98xx

NOTE: *NASLite-SMB and NASLite-SMBG differ only in the network interface adapters they support. NASLite-SMB does not support gigabit network interface adapters while NASLite-SMBG supports only gigabit network interface adapters. If you intend to use a gigabit network interface adapter in your NASLite-SMB server, then use NASLite-SMBG.*

Software Setup

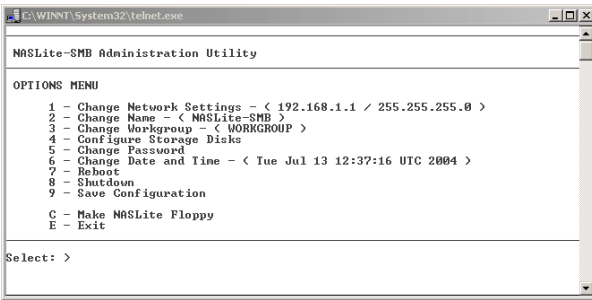
For the initial NASLite-SMB software setup, you'll need to have a monitor and a keyboard connected to the computer. Boot the computer using the NASLite-SMB floppy disk. After the boot sequence is complete, the initial login screen is displayed.

NOTE: *The NASLite-SMB floppy disk is formatted to 1.72MB. On rare occasions, the computer BIOS may not be capable of booting a 1.72MB formatted floppy disk.*

The first thing to make sure is that the network interface was detected and properly initialized. If the **Server - Network Initialized...** message is displayed, and the READY audible prompt generated (see NASLite-SMB as an Appliance), then the network interface is supported and ready. If NASLite-SMB fails to detect and initialize the network interface, then NASLite-SMB will generate the CHECK NETWORK audible prompt. In that case, the network interface may be damaged or not supported. A compatible, working network interface must be installed.

NOTE: *NASLite-SMB is a workgroup file server. It must be configured as a member of a workgroup in order for other members of that workgroup to access its' resources.*

The login name is **admin** (in lower case letters). The default admin password is **nas** (also in lower case letters). When you have successfully logged in, the NASLite-SMB Administration Utility Options Menu will be displayed. All configuration settings are done using this menu.



NASLite-SMB Administration Utility Options Menu

1 - Configure Network Settings - NASLite-SMB network configuration consists of setting the IP Address, Server Name and Workgroup Name (Options 1, 2, and 3). Make sure that the IP address is unique and is in the same subnet as the rest of the workgroup computers. The server name is what you will see when you browse the workgroup or network from your computer and should also be unique. The network settings are stored on the NASLite-SMB floppy disk, so when you have set the IP address, server name and workgroup name the settings must be saved (Option 9) with the NASLite-SMB floppy disk in the floppy disk drive.

2 - Configure Disks - NASLite-SMB fixed disk drives need to be set up next (Option 4). The Configure Storage Disks menu screen (Option 4) explains the process in detail. Configuration will reformat each fixed disk drive. This may take a few minutes, depending on the disk capacity. You can optionally scan for bad blocks. We recommend this even on newer disks.

3 - Apply Configuration - To apply the new configuration settings the NASLite-SMB server must be rebooted (Option 7).

Assuming the configuration settings are correct, the NASLite-SMB server should now be online and ready for use. You should be able to see the NASLite-SMB server when you browse the workgroup. It is a good idea to log in to the NASLite-SMB server using TELNET from any computer on your network at this point. To login via TELNET from Windows, follow these steps:

1. Click Start, then click Run.
2. Type telnet and a space and then type the IP address of the NASLite-SMB server. For

example: `telnet 192.168.1.1`, then click OK

3. You should get the login prompt. Login and you should get the NASLite-SMB Administration Utility Options Menu.
4. Log out (Option E).
5. Your TELNET window will close.

Server Security

The storage made available by NASLite-SMB is not restricted in any way. Any user capable of accessing the NASLite-SMB server via SMB can read and write openly. Only the NASLite-SMB Administration Utility is password protected in order to restrict unauthorized access to the Options Menu.

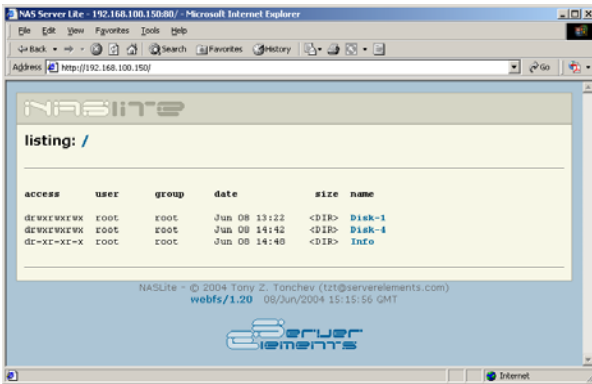
Using the NASLite-SMB Server

NASLite-SMB will name all installed and configured fixed disk drives available on the server computer as **Disk-1** through **Disk-4** respectively. These names are fixed and cannot be changed. All **Disk-X** shares are read/write enabled and are accessible by all workgroup users. The **Disks** and **Info** shares are made available by default, and are read-only.

Name	Comment
Disk-1	NAS Disk-1 (Read / Write)
Disks	NAS Disks (Read Only)
Info	NAS Information (Read Only)

Typical NASLite-SMB Shares

The NASLite-SMB storage contents are also made available to the local network via HTTP (port 80) and can be accessed using any web browser. For example let's assume that your NASLite-SMB server IP address is 192.168.1.1. Entering `http://192.168.1.1` in the browsers' address bar can then access the server content inside the browser window.



Typical NASLite-SMB HTTP Content

NOTE: Files stored on the NASLite-SMB storage disks are made available to all network users via HTTP. That allows any Operating System to access the NASLite-SMB contents via a web browser, making it ideal for a PDF, image, video or an MP3 file library server.

Disk Health and Monitoring

When the NASLite-SMB server boots, each fixed disk drive filesystem is identified and checked. If a filesystem is identified and maintenance is scheduled, NASLite-SMB automatically analyzes and attempts to fix any existing filesystem problems before storage is made available for use.

NOTE: When a fixed disk drive filesystem is being checked, NASLite-SMB storage will not be available for use. The pending check may take anywhere from 1 to 20 or more minutes depending on the fixed disk drive size and contents. A pending check can be identified by observing the associated fixed disk drive activity LED shortly after booting NASLite-SMB. The associated fixed disk drive activity LED will be continuously on for the duration of the check.

NASLite-SMB also monitors the health of the storage fixed disk drives using Self-Monitoring, Analysis and Reporting Technology (SMART) built into most modern ATA fixed disk drives. In many cases, NASLite-SMB will provide advanced warning of fixed disk drive degradation and failure. When NASLite-SMB first boots, it initiates a SMART Self-test for each one of the configured storage fixed disk drives. The SMART status of the configured storage fixed disk drives is also checked every 5 minutes. The fixed disk drives SMART status can be viewed

using the NASLite-SMB Status Info made available through the **Info** share.

In the event of approaching failure, NASLite-SMB will begin generating a 5-beep audible alarm every 5 minutes. At that time it's best to take the necessary precautions to remove important data from the affected disk.

Content Backup

NASLite-SMB does not provide a built-in backup. Backup of content residing on a NASLite-SMB server is best performed from another workgroup computer.

NASLite-SMB as an Appliance

NASLite-SMB is well suited for operation as a network appliance, remotely administered and without an attached monitor and keyboard. Remote administration can be performed from any computer on the same network via TELNET.

To compensate for the lack of visible indicators on the physical server, NASLite-SMB employs a number of audible prompts that indicate states and or conditions. The audible prompts are generated via the PC speaker, so no additional sound hardware is necessary. The table below provides a list of audible prompts and their corresponding states.

AUDIBLE PROMPT	STATE
2 x 300Hz + 1 x 700Hz	READY - Server is online and ready for use.
2 x 700Hz + 1 x 300Hz	SHUTDOWN - Power may be shut down manually in 5 seconds.
5 x 200Hz	CHECK NETWORK - Unable to detect or initialize network interface card.
3 x 700Hz + 3 x 300Hz	CHECK DISK - Fixed disk drive fails overall SMART self-assessment.

NOTE: The information provided in the AUDIBLE PROMPT column represents the number of beeps

and their pitch. For example, when the NASLite-SMB server is ready for use, it will generate a **READY** prompt by sounding two 300Hz beeps followed by a single 700Hz beep.

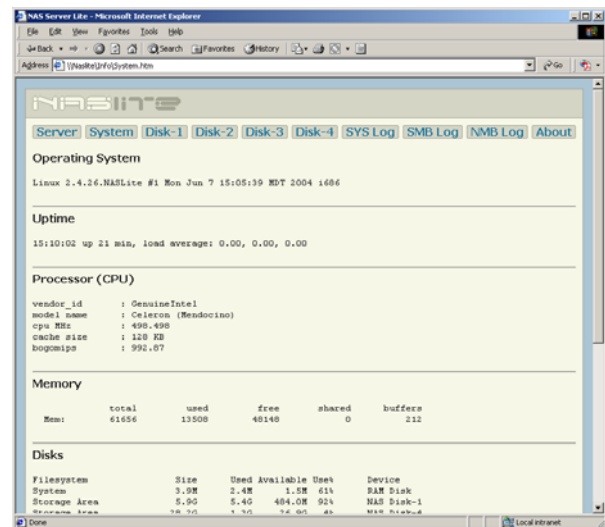
Administration Utility

The NASLite-SMB Administration Utility is a console-based menu-driven utility that can be accessed at the server computer via a locally connected monitor and keyboard, or remotely through TELNET. The NASLite-SMB Administration Utility menu options are as follows:

- **Change Network Settings** - Configure IP address and netmask.
- **Change Name** - Set unique server name. The server name is what this NASLite-SMB server is called when browsing the workgroup.
- **Change Workgroup** - Set the name of the workgroup that this NASLite-SMB server will join.
- **Configure Storage Disks** - Format available fixed disk drives for use NASLite-SMB storage.
- **Change Password** - Change the **admin** user password. The default admin password is **nas**.
- **Change Date and Time** - Set NASLite-SMB computer date and time. Provided values must be GMT time.
- **Reboot** - Reboots the NASLite-SMB server.
- **Shutdown** - Shuts down the NASLite-SMB server.
- **Save Configuration** - Saves network configuration settings to the NASLite-SMB floppy disk.
- **Make NASLite Floppy** - Facilitates the creation of NASLite-SMB floppy disk copies.
- **Exit** - Exits the NASLite-SMB Administration Utility Options Menu.

Status Info

NASLite-SMB exports a special **Info** share for the purpose of providing server status information. The status information is made available via a number of HTML pages that are updated every 5 minutes. To access the server status pages, click to view any of the HTML files from the Info share. Your default HTML browser will then open the selected HTML page. At that time you can navigate between the individual status pages by using the provided link buttons.



Typical NASLite-SMB Status Info Page

The NASLite-SMB Info share offers the following status information pages:

- **Server** – Provides information about server network settings, lists recent server users and displays the server (Samba) configuration file.
- **System** – Displays information about the server OS, uptime, load, CPU, memory, fixed disk drive usage and network interface status.
- **Disk-1** - Displays Disk 1 initialization messages, hardware description and S.M.A.R.T. status information if applicable. Disk 1 is the primary (master) fixed disk

drive on the primary IDE controller.

- **Disk-2** - Displays Disk 2 initialization messages, hardware description and S.M.A.R.T. status information if applicable. Disk 2 is the secondary (slave) fixed disk drive on the primary IDE controller.
- **Disk-3** - Displays Disk 3 initialization messages, hardware description and S.M.A.R.T. status information if applicable. Disk 3 is the primary (master) fixed disk drive on the secondary IDE controller.
- **Disk-4** - Displays Disk 4 initialization messages, hardware description and S.M.A.R.T. status information if applicable. Disk 4 is the secondary (slave) fixed disk drive on the secondary IDE controller.
- **SYS Log** – Displays the current system messages log file.
- **SMB Log** – Displays the current SMB/CIFS Server (smbd) log file.
- **NMB Log** - Displays the current NetBIOS Name Server (nmbd) log file.
- **About** – Contains general NASLite-SMB information.

NASLite-SMB Source Components

NASLite-SMB is built using one or more components of the following:

- **Linux Kernel** (www.kernel.org) - POSIX compliant Unix clone
- **Samba** (www.samba.org) - SMB/CIFS file services
- **uClibc** (www.uclibc.org) - Compact C library
- **BusyBox** (www.busybox.net) - Compact Unix utilities
- **e2fsprogs** (e2fsprogs.sourceforge.net) - Second extended file system utilities

- **webfs** (www.bytesex.org) - Simple HTTP Server
- **smartmontools** (smartmontools.sourceforge.net) - S.M.A.R.T. utility toolset.

Copyrights and Trademarks

© 2004 Tony Z. Tonchev (tzt@serverelements.com)

This manual may be reproduced in whole or in part, without fee, subject to the following restrictions:

- The copyright notice above and this permission notice must be preserved complete on all complete or partial copies.
- Any translations or derived works must be approved in writing by the author before distribution.
- If you distribute this work in part, instructions and means for obtaining the complete version of this manual must be included.
- Small portions may be reproduced as illustrations for reviews or quotes in other works without this permission notice if proper citation is given.

Licensing and Disclaimer

The NASLite software consists of Open Source software and proprietary Server Elements software. The Open Source components are freely distributed under the respective Open Source licenses. Server Elements software is distributed under Server Elements' terms.

THIS SOFTWARE IS PROVIDED BY THE COPYRIGHT HOLDERS AND CONTRIBUTORS "AS IS" AND ANY EXPRESS OR IMPLIED WARRANTIES, INCLUDING, BUT NOT LIMITED TO, THE IMPLIED WARRANTIES OF MERCHANTABILITY AND FITNESS FOR A PARTICULAR PURPOSE ARE DISCLAIMED. IN NO EVENT SHALL THE REGENTS OR CONTRIBUTORS BE LIABLE FOR ANY DIRECT, INDIRECT, INCIDENTAL, SPECIAL, EXEMPLARY, OR CONSEQUENTIAL DAMAGES (INCLUDING, BUT NOT LIMITED TO, PROCUREMENT OF SUBSTITUTE GOODS OR SERVICES; LOSS OF USE, DATA, OR PROFITS; OR BUSINESS INTERRUPTION) HOWEVER CAUSED AND ON ANY THEORY OF LIABILITY, WHETHER IN CONTRACT, STRICT LIABILITY, OR TORT (INCLUDING NEGLIGENCE OR OTHERWISE) ARISING IN ANY WAY OUT OF THE USE OF THIS SOFTWARE, EVEN IF ADVISED OF THE POSSIBILITY OF SUCH DAMAGE.